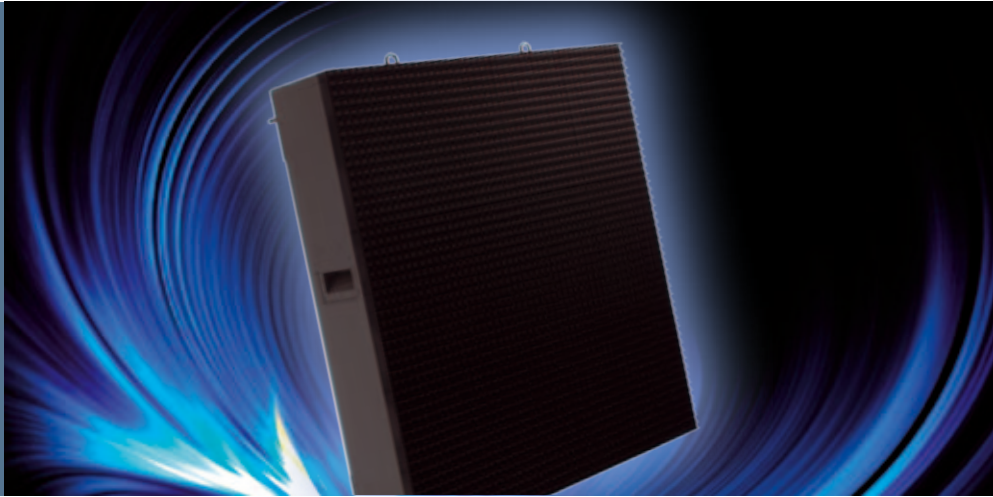


# TF-16BK

The first black LED outdoor LED display on the market



## Key Benefits

- New black LED with high contrast ratio
- Clickable shaders
- Low weight cabinet with integrated ladder
- Best cost versus video performance
- IP65 protection rated
- Front and back serviceable

Barco's black outdoor LED display TF-16BK is the blackest 16mm outdoor LED display on the market today. It delivers high-resolution full color images with extreme brightness levels. All LEDs are also equally spaced at 8mm, which gives the display a fill factor that is perfect for video content.

The key feature that makes the TF-16BK really unique is a specially designed black lamp LED. This black lamp LED offers vastly improved contrast levels, unseen for any 16mm LED display on the market today. It allows the TF-16BK to display deeper and richer image colors, providing a radically improved image quality.

The T-16BK can be built into any size display, and can easily be built into convex or concave shapes. Therefore, it is perfectly suited for countless applications in the fixed installations market. In addition, the TF-16BK can be used in bright sunlight as well as in rain and is thus ideal for use at all outdoor locations.

The low weight cabinet with integrated ladder, clickable shaders, front and back access make the TF-16BK ideal for quick on the job servicing, which reduces your costs significantly. In short, the TF-16BK is a black outdoor LED display that offers a supreme image quality for the best possible return on investment.

**BARCO**

Visibly yours

# TF-16BK Technical specifications

<b>Pixel pitch</b>	16 mm	
<b>Brightness</b> (display calibrated at 6,500K)	6,000 nits	
<b>LED configuration</b>	3 black lamp	
<b>Pixel density</b>	3,906/sqm - 363/sqf 3,600/tile (60x60)	
<b>Viewing angle</b> (@50% brightness)	H : 110 degree V : +15/-35 degree	
<b>Contrast ratio</b>	7,000:1	
<b>Lifetime</b> (@50% brightness)	100,000 hrs	
<b>Power consumption</b>	400 W max (full white, full brightness, calibrated) 120 W average	
<b>Operation power voltage</b>	200-240 V / 50-60 Hz	
<b>Tile size</b> (W x H x D)	960 x 960 x 281.95 mm	
<b>Tile/display surface</b>	0.9216 m <sup>2</sup>	
<b>Curve capability</b>	Concave	0 - 13°
	Convex	unlimited
<b>Weight</b> (including structure)	48 kg/tile (105.8 lbs) - 52 kg/m <sup>2</sup>	
<b>Protection rating</b>	IP65/54	
<b>Application</b>	fixed installations	
<b>Processing</b>	16-bit/color	
<b>Colors</b>	281 trillion	
<b>Refresh rate</b>	800 Hz	
<b>Link interface</b>	DVI interface	
<b>Servicing</b>	front or back	
<b>Operating temperature</b>	-35 – 50°C (temperature air at inlet)	
<b>Storage temperature</b>	-35 – 50°C	
<b>Operation humidity</b>	10 – 99%	
<b>Storage humidity</b>	10 – 99%	
<b>Source compatibility</b>	CVBS, YC, YUV, RGB, DVI, SDI, HDS DI, Dual link DVI, Dual link HDS DI	
<b>Operatable digitizer</b>	DX-700 (with DVI output card) D320 LED-PRO	
<b>Certification</b>	ETL, CE, FCC, RoHS, CCC, TUV	
<b>Order numbers</b>	Front access	R9004825B1/B3
	Back access	R9004829B1/B3



March 2009

The information and data given are typical for the equipment described. However any individual item is subject to change without any notice. The latest version of this brochure can be found on [www.barco.com](http://www.barco.com).

Barco nv  
Media & Entertainment Division  
Noordlaan 5, 8520 Kurne - Belgium  
Tel. +32 56 36 80 47 - Fax + 32 56 36 83 86  
email: [sales.events@barco.com](mailto:sales.events@barco.com)

**BARCO**

Visibly yours