

SLite



Outdoor LED display solutions

Barco's outdoor LED display product range - the SLite - is a rugged, IP65 rated outdoor display product that delivers high-resolution full color images with unequalled brightness and contrast levels.

Barco's cutting-edge technology, incorporated in the SLite, ensures perfect video and graphics performance across the entire display, regardless of shape, size or resolution.

The SLite product range offers a modular outdoor display concept that allows the build-up of almost any shape and size display that is ideal for use at outdoor locations with large viewing distances. The SLite range is available in 10mm and 14mm resolution versions.

The SLite displays are ideally suited for countless applications - from entertainment venues to sport stadiums, theme parks and outdoor advertising.

BARCO

Visibly yours

Brilliant outdoor LED solutions

The SLite display products, with their IP65 certification, offer the perfect solution to generating the ultimate picture in all outdoor environments.

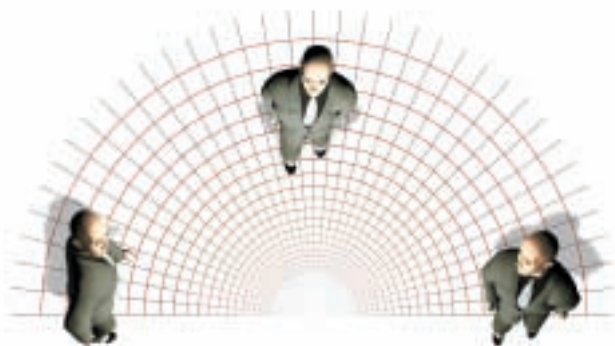
Fully engineered and manufactured by Barco, they are the cutting-edge in LED display technology and design quality. An extremely stringent selection of the LED components together with Barco's extensive experience in image processing and generation guarantees ultimate picture quality, color uniformity and cost of ownership.

The outdoor LED display range, available in 10mm and 14mm resolutions, offers the perfect solution to generating the perfect picture in all bright environments, including direct sunlight. SLite LED products offer many benefits not found in other display technologies.

- **Unmatched image quality & display performance**

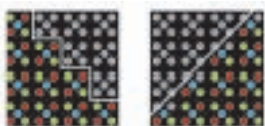
With its ultra-high light output, the Barco outdoor LED display products offer unequalled brightness and contrast levels making them ideal for use in very bright outdoor locations, even in direct sunlight.

The products have been designed to guarantee optimal viewing conditions for all spectators. Even at viewing angles of 120 degrees horizontal and 60 degrees vertical, viewers still perceive half of the full brightness.



high brightness, even at extreme viewing angles

Barco's unique, proprietary Dual Pixel Technology, incorporated in SLite products, offers a greatly enhanced perceived resolution by visually doubling the physical resolution, offering you 'more resolution for your money'.



With the Dual Pixel Technology individual leds can be addressed, resulting in a higher resolution display with an even smoother image.

- **True color reproduction & authentic video quality**

The SLite display products incorporate Barco's Proprietary LED System Color Signature, True Color Reproduction™ and True Motion Reproduction technology, which ensure

accurate color uniformity and smoother, flicker-free video. Whether it is used as a video board, or for data content and messaging, the SLite display products offer the perfect picture over the life-time of the display.

Barco's True Color Reproduction Technology ensures color accuracy and consistency across the entire screen and across time



- **Rugged, modular design**

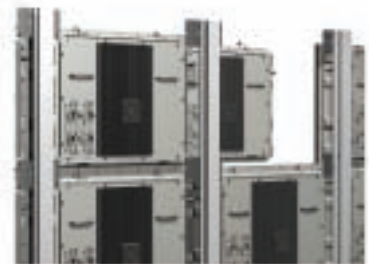
With their modular design, the SLite modules offer both optimal flexibility in the shape and design of the display and guarantee seamless scalability.

The rugged, dust and water-proof modules are certified IP65, making them resistant to harsh external elements, and thus ideal for use in all outdoor conditions.

For fixed installations, the modules are placed in a rugged structure that is tailored to each specific installation and that easily integrates into any environment.

State-of-the-art mechanical design allows ease of servicing, while built-in intelligence enables auto configuration and

hot-swapping of modules without interrupting the performance of the display - guaranteeing minimum down time and minimum time to repair per display.



- **Ultimate system reliability**

Using Total Quality Management techniques in both component sourcing & manufacturing as well as product design ensures a quality product that delivers a secure long-term investment. Every SLite module is also equipped with an embedded PC, which provides it with intelligence and processing upgradability. Add to that each tile's built-in innovative heat management system, and Barco's outdoor display products offer a high-quality display solution with a longer life-time, ensuring lower cost of ownership than many of its competitors.

- **New revolutionary shader design**

The SLite 10XP FX incorporates a new revolutionary "light trap" shader. Its radically new geometric design combined with specially selected dark black, matt materials essentially "traps" the light falling on the display ensuring superb black levels. When

combined with the high brightness output level of 5,500 NIT (calibrated), the SLite 10XP FX now delivers vastly improved contrast levels to its predecessor.



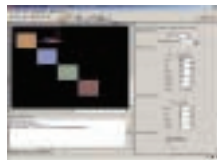
- **Advanced 14-Bit processing / XP calibration**

The SLite 10XP FX features advanced 14-bit processing and XP (LED level) calibration, which results in even greater color depth and uniformity, allowing the display to show vibrant images with even deeper and more uniform colors across the entire surface of the display.

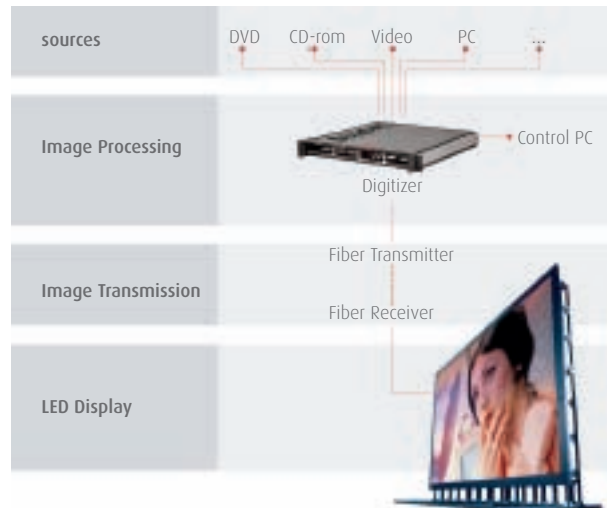
A complete display solution

Barco's SLite products are more than just the best range of outdoor LED displays available. It's integrated concept from image processing and transmission to the application specific mounting structure allow for fast set-up, easy service and full control over both video and data sources.

Combined with Barco's application software for display management and control, the outdoor LED display products provide a complete solution for visualization in various outdoor environments.



Director Toolset -
LED display configuration software



Countless applications

Barco's SLite display range offers many different resolution options that are suitable to a variety of applications in the rental & staging market as well as for fixed outdoor installations:

- Entertainment venues
- Sports stadiums
- Outdoor advertising
- Spectaculars
- Retail
- Architectural integration



Bank of America,US,2005

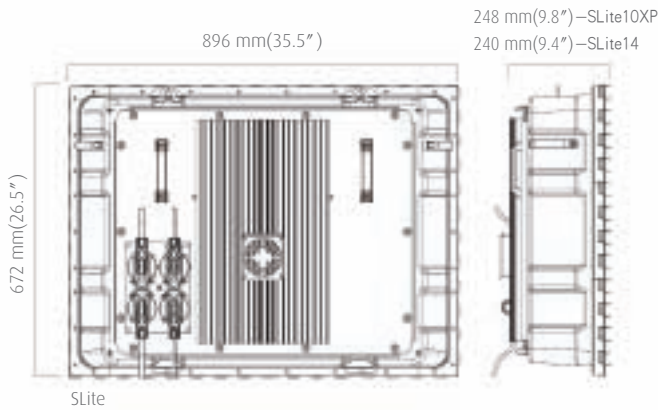
City Hall Square,Copenhagen,Denmark,2006



Western Michigan University, U.S.2003



SLite specifications

	SLite 10XP FX	SLite 14
Visual resolution	10.18 mm	14 mm
Physical resolution	20.36 mm	28 mm
Brightness (Display callibrated at 6500°k±10%)	6500 NIT 5500 NIT	6500 NIT 5000 NIT
Contract ratio (at 200 lux)	2000:1	1950:1
LED configuration	2R,1G,1B	2R,2G,1B
Pixel density	9646/m ² (869/ft ²) 5808/panel	5098/m ² (474/ft ²) 3072/panel
Viewing angle (min. 50% brightness)		
-Horizontal	120°	120°
-Vertical	60°	60°
Lifetime (full white - half brightness)	50,000 h	50,000 h
Lifetime (typical use)	100,000 h	100,000 h
Power consumption / tile		
-maximum	640 W / Tile	720 W
-average	160 W / Tile	180 W
Weight / tile (excluding structure)	38.9kg(86lbs)	38.4kg(84.9lbs)
Processing (Color)	14bit	14bit
Processing (Greyscale)	10bit/(color)	10bit/(color)
Colors	4.4 trillion	4.4 trillion
Refresh rate (PAL/NTSC) minimum	> 2000 Hz (PAL / NTSC)	800Hz
Ruggedness	IP65	IP65
Temperature		
-operating	-20~40°C (-4~104°F)	-20~40°C
-storage	-20~60°C (-4~140°F)	-20~60°C
Humidity		
-operating	10~99%	10~99%
-storage	10~99%	10~99%
Source compatibility	S-Video , Composite , YUV , RGB , SDI , HDSOI , Data DVI up to UXGA	
Certification	ETL, CE, CEBEC, TUV, FCC class A	
	 <p>896 mm(35.5")</p> <p>672 mm(26.5")</p> <p>248 mm(9.8")—SLite10XP 240 mm(9.4")—SLite14</p> <p>SLite</p>	

Ref.no. R599624 - Apr,2007

The information and data given are typical for the equipment described.
However any individual item is subject to change without any notice
The latest version of this product sheet can be found on www.barco.com.

Belgium
Noordlaan5
8520 Kuurne
Tel: +32 56 36 80 22
Fax: +32 56 36 88 62
Email: media.sales@barco.com

United States
11101 Trade Center Drive,
Rancho Cordova, CA 95670
Tel: +1 888 414 7226
Email: salesusa@barco.com

P.R.China
No.16 Changsheng road,
Changping district, Beijing, 102200
Tel: +86 10 8010 1166
Fax: +86 10 8010 5835
Email: marketing.sports&OHM@barco.com

BARCO

Visibly yours

www.barco.com