

# NX Series

## The true black LED display



### NX series:

- Phenomenal black levels
- 4,000+:1 contrast ratio
- 2,000 NIT brightness
- 16-bit color processing
- Replaceable shaders
- Consistent uniformity
- High Definition-ready
- Modular creativity

### The new visual standard

Experience the new visual standard in indoor LED displays — Barco's all-new NX series. With its revolutionary black LED, the NX delivers more contrast and deeper black levels than any other product on the market. Key advances in base materials, mechanical design and color processing set NX ahead of the competition for years to come. No other indoor LED screen comes close.

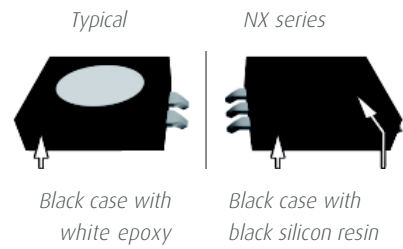


**BARCO**

Visibly yours

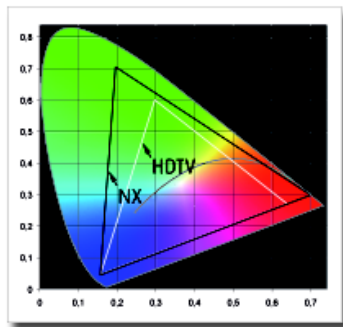
## Black and bright—an elegant contradiction

The striking visual difference of the NX series' true black LED is noticeable even before the screen is turned on: black silicon resin (instead of traditional white epoxy) produces a sheer black surface; replaceable "light trap" shaders eliminate ambient reflection; and ultra black exterior casting blends components into a single, uniform color. Turn the screen on, however, and discover the real brilliance of the NX series—true black at 2,000 NIT brightness, with a contrast ratio of over 4,000:1.



## 16-bit color processing

In addition to true black, the NX series produces 281 trillion other colors as well, delivering breathtaking new levels of depth and detail, with a color gamut wider than HDTV. One look at a Barco NX series display and you'll know you're experiencing a world-class product at the height of technological achievement.

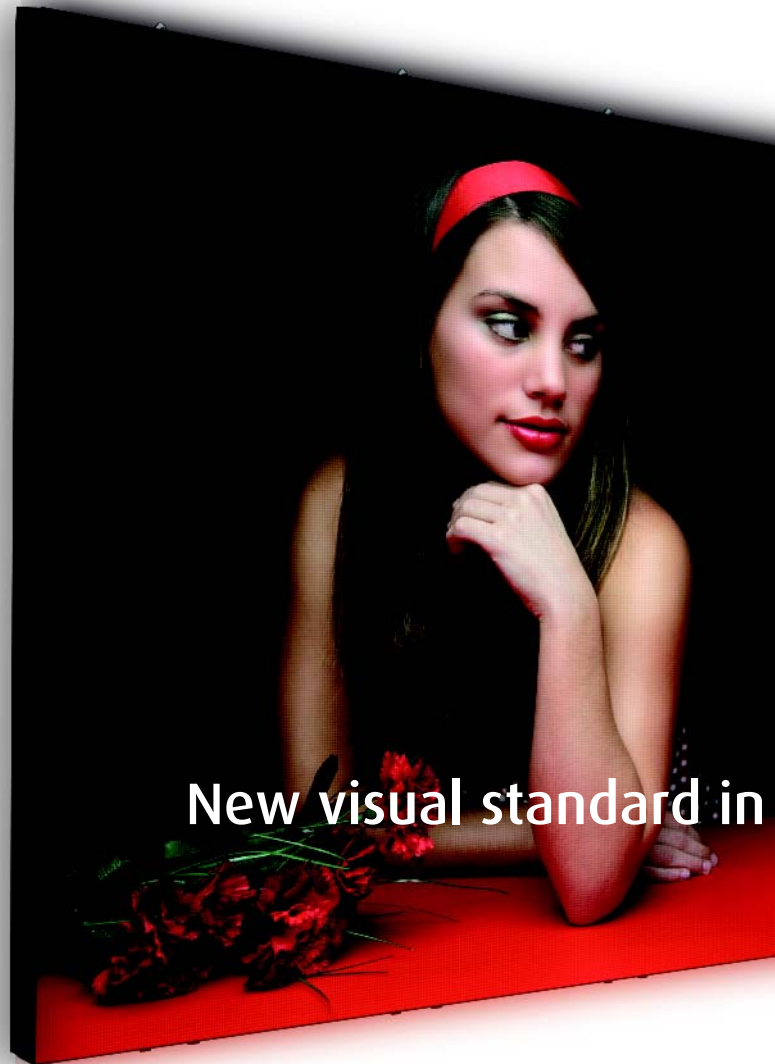


*NX color gamut exceeds HDTV*

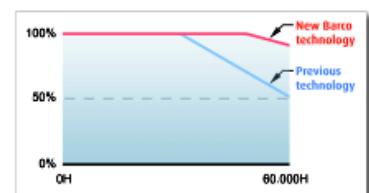
## Consistent uniformity over time

While most indoor LED systems expire at 50% brightness at 50,000 hours, Barco's NX series retains 75% brightness at 60,000 hours. Three key advancements pre-empt the LED aging process:

- Advanced LED coloration achieves higher brightness at lower temperatures, resulting in less stress and longer life.
- Black silicon resin (instead of traditional white epoxy) maintains consistency under heat and humidity.
- Advanced tri-color calibration and stricter measuring standards achieve precision uniformity and extended endurance.

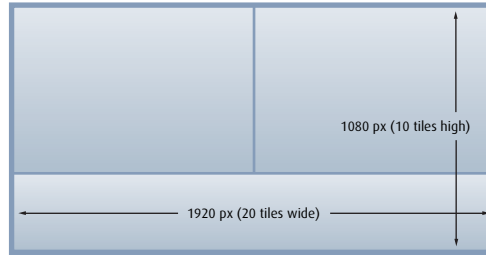


*NX series maintains 75% brightness 10,000 hours after other LED screens have expired.*



## High Definition-ready

Each NX tile features an 8x9 aspect ratio. Place two tiles side-by-side and you're spot-on 16x9. Expand 10 tiles by 20 and your precise pixel resolution is 1920x1080 — the original HD resolution.



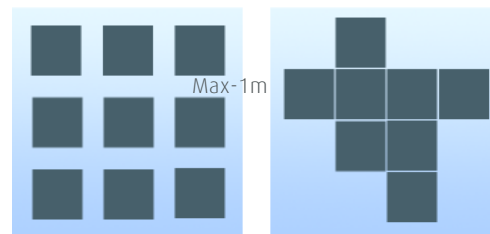
HD 1920 x 1080

*Connect two tiles for instant 16x9 aspect ratio.*

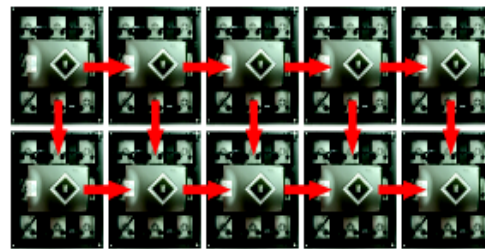
*Connect 10 tiles by 20 for perfect HD resolution.*

## Creativity, 4-way data connection, front/back service

Each NX tile separates into nine blocks, enabling endless creative designs. Revolutionary 4-way data connection links tiles from all directions (instead of traditional “snaking”) for more robust reliability, faster start-up of large displays, and rapid hot-swap of tiles (front and back serviceable).



*Nine blocks per tile enable endless creative set-ups.*



*4-way data cables link tiles on all sides for greater reliability, faster start-up and rapid hot-swap.*

## LED displays



## DX-700 processor makes NX series shine

Purpose-built as a “no compromise” system for the NX series, Barco's new DX-700 is a multi-window processor and versatile digitizer for all current (DVI) and next generation (NNI) Barco LED platforms. Universal inputs accept DVI (RGB or YCbCr), Dual-DVI (RGB), Component Analog (RGB or YPbPr), SD-SDI, HD-SDI, and Dual HD-SDI formats. DX-700 also supports creative configurations and is stackable for larger, complex setups.

Features include:

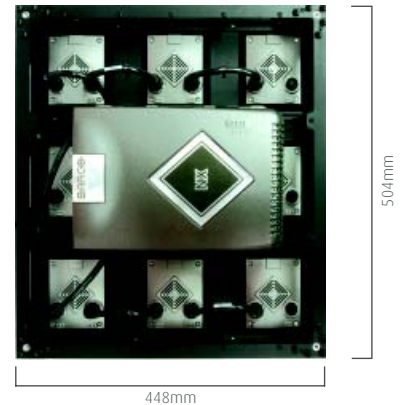
- 16-bit processing
- 10-bit color depth (4:4:4/4:2:2)
- Seamless input transition
- Preset storage/recall
- Comprehensive setup wizards
- Motion-adaptive de-interlacing
- Digital video effects (freeze, strobe, etc.)
- Dynamic contrast enhancement (all inputs)
- Input adjustment (saturation, balance, sharpness)
- And much, much more!

## NX Series specifications

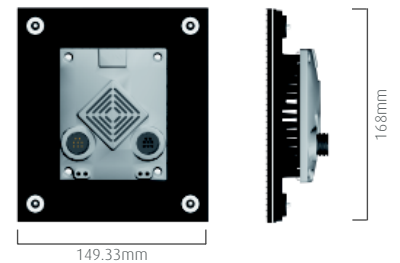
	NX-4	NX-6
Pixel pitch	4.6mm	6.2mm
Brightness (calibrated)	2,000 NIT	2,000 NIT
LED configuration	3-in-1 SMD	3-in-1 SMD
Pixel density	10,368/tile (96x108)	5,832/tile (72x81)
Viewing angle (horizontal)	120°	120°
Viewing angle (vertical)	+48° , -55°	120°
Contrast ratio	4,000:1	4,200:1
Power consumption/tile		
• max	300 watts	335 watts
• average	100 watts	156 watts
Color processing	16-bit/color	16-bit/color
Colors	281 trillion	281 trillion
Refresh rate	3,200 Hz	3,200 Hz
Temperature		
• operating	0°C to 40°C (32° F to 104° F)	0°C to 40°C (32° F to 104° F)
• storage	-20°C to 60°C (-4° F to 140° F)	-20°C to 60°C (-4° F to 140° F)
Humidity		
• operating	35 to 85%	35 to 85%
• storage	10 to 90%	10 to 90%
Weight/tile (structure, cable)	13.8 kg (30.1 lbs)	13.8 kg (30.1 lbs)
Lifetime (75% brightness)	60,000 hours	60,000 hours
Source compatibility	CVBS, YC, YUV, RGB, DVI (Single and Dual Link, up to 2048x1536),SDI, HD-SDI, Dual link HD-SDI	
Certification	CE class A, TUV, FCC Class A, ETL, CEBEC	

## Dimensions

### Tile



### Module



Ref. No.: R599304 - March 2008

While the information and data given are typical for the equipment described, product specifications are subject to change without notice. The latest version of this product sheet can be found at [www.barco.com](http://www.barco.com).

Belgium  
Noordlaan 5  
8520 Kuurne  
Tel: +32 56 36 80 22  
Fax: +32 56 36 88 62  
Email: [media.sales@barco.com](mailto:media.sales@barco.com)

United States  
11101 Trade Center Drive  
Rancho Cordova, CA  
95670  
Tel: +1 888 414-7226  
Email: [salesusa@barco.com](mailto:salesusa@barco.com)

APAC  
No.16 Changsheng Road  
Changping Dist., Beijing, PRC,102200  
Tel: +86 10 8010 1166  
Fax: +86 10 8970 9812  
Email: [marketing.media@barco.com](mailto:marketing.media@barco.com)