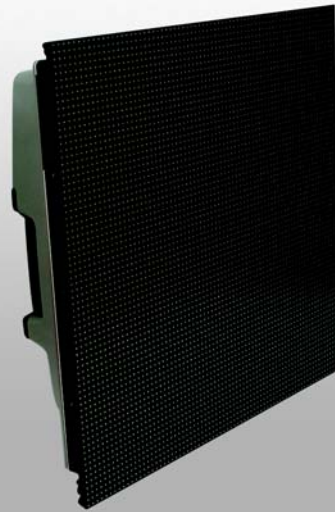


# ILite 6 BK

## 6mm indoor black LED display



### ILite 6 BK features:

3-in-1 SMD black LED  
3,000:1 contrast ratio  
New shader design  
2,000 NIT brightness  
14-bit color processing  
System Color Signature  
ILite series compatible  
145° viewing angles  
UL, CE, TUV, CEBEC

### Enhanced contrast and visual performance

Introducing the newest member of Barco's already impressive ILite series: the revolutionary ILite 6 BK, with 3,000:1 contrast ratio, 2,000 NIT brightness, and 14-bit color processing.

Black LEDs, redesigned shaders, and extra gray scale processing deliver three times the contrast ratio of ILite 6 XP — even in low light settings. Extreme Fill Factor produces uniform images mere steps away, while 2,000 NIT brightness delivers suitable light levels for indoor applications, such as:

- Corporate branding and retail
- Out-of-home Media networks
- Crowd management systems
- Product showrooms

Barco's System Color Signature, True Color/Motion Reproduction, and 14-bit processing ensure vibrant images and flicker-free video, with a color gamut that exceeds PAL/NTSC. Powered by Barco's DX-700, ILite 6 BK is fully compatible with all ILite series peripherals, and installs neatly and discreetly where space requirements are limited.

**BARCO**

Visibly yours

## ILite 6 BK specifications

	<b>ILite 6 BK</b>
Pixel pitch	6mm
Brightness (display calibrated at 6500°K)	2,000 NIT
LED configuration	3-in-1 SMD
Pixel density	5,184/tile (72 x 72)
Viewing angle	
• horizontal	>120°
• vertical	>120°
Contrast ratio	3,000:1
Lifetime (full white - half brightness)	45,000 hrs
Power consumption/tile	
• maximum	355 W
• average	156 W
Weight/tile	10.8 kg (23.8 lbs)
Color processing	14-bit/color
Colors	4.4 trillion
Refresh rate (PAL/NTSC) minimum	400 Hz
Temperature	
• operating	0°C to 40°C (32°F to 104°F)
• storage	-20°C to 60°C (-4°F to 140°F)
Humidity	
• operating	35% to 85%
• storage	10% to 90%
D320 input compatibility (modules)	S-Video, Composite, YUV, RGB, SDI, HDSDI, Data DVI up to UXGA
Certification	CE, CB, CEBEC, TUV, ETL
Order information	R9010251
Dimensions (W x H x D)	448 x 448 x 127 mm

Ref. No.: R599303 - March 2008

While the information and data given are typical for the equipment described, product specifications are subject to change without notice. The latest version of this product sheet can be found at [www.barco.com](http://www.barco.com).

Belgium  
Noordlaan 5  
8520 Kuurne  
Tel: +32 56 36 80 22  
Fax: +32 56 36 88 62  
Email: [media.sales@barco.com](mailto:media.sales@barco.com)

United States  
11101 Trade Center Drive  
Rancho Cordova, CA  
95670  
Tel: +1 888 414-7226  
Email: [salesusa@barco.com](mailto:salesusa@barco.com)

APAC  
No.16 Changsheng Road  
Changping Dist., Beijing, PRC, 102200  
Tel: +86 10 8010 1166  
Fax: +86 10 8970 9812  
Email: [marketing.media@barco.com](mailto:marketing.media@barco.com)

**BARCO**

Visibly yours